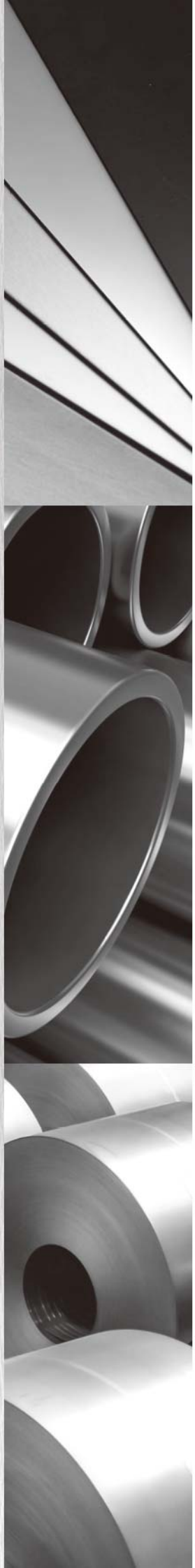




超強

YOUR CHOICE FOR STAINLESS



# YC INOX 關於允強

INNOVATION AND EXCELLENCE  
QUALITY FIRST AND ESG-ORIENTED  
YOUR **C**HOICE FOR STAINLESS

**7**

PLANTS

**1,000 +**

EMPLOYEES

**330,000 +**

SQUARE METERS

**360,000 +**

TONNES of ANNUAL CAPACITY



▲ TÜRKIYE TUBE MILL  
35,200 m<sup>2</sup>

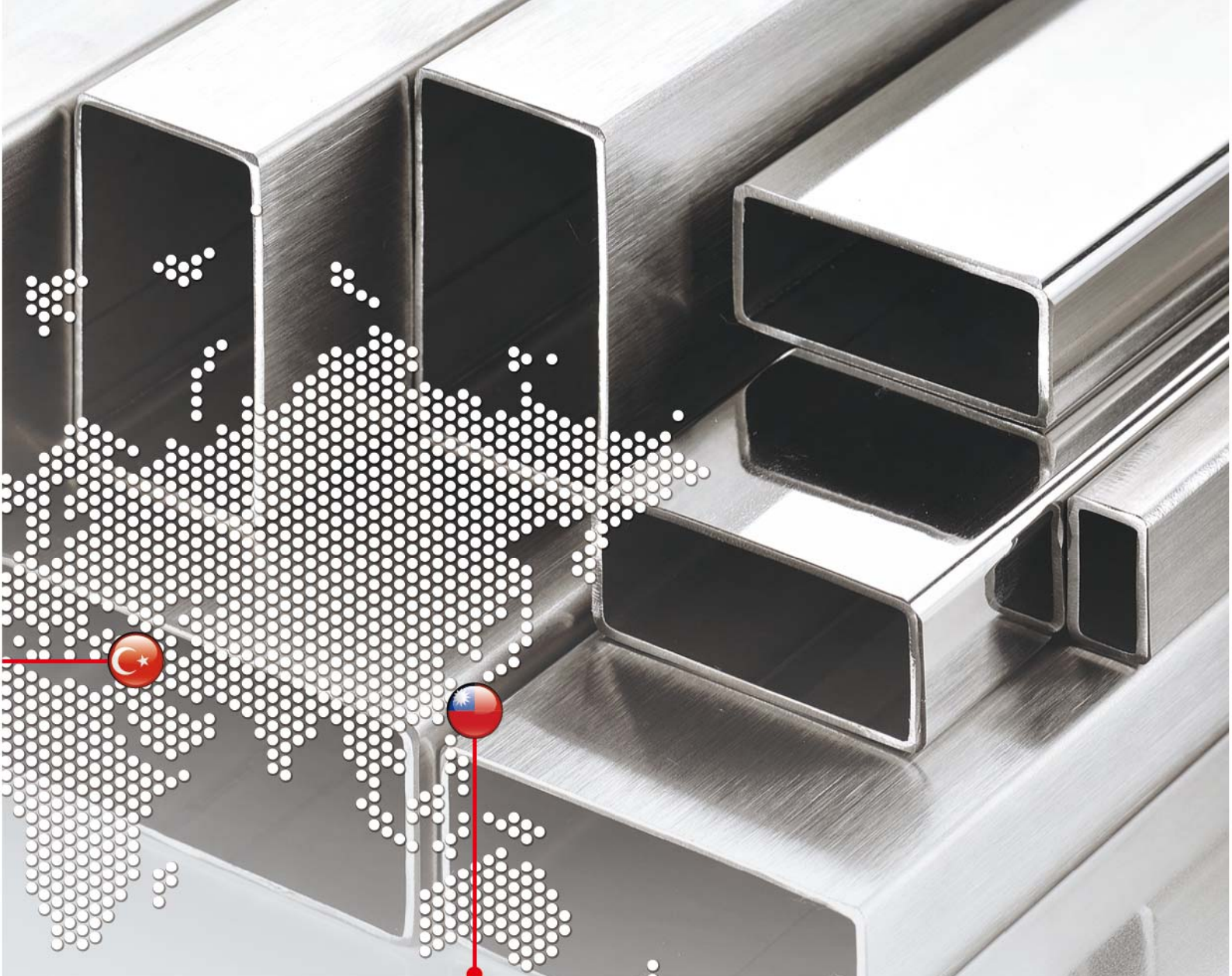


▲ TÜRKIYE PIPE MILL  
40,000 m<sup>2</sup>



▲ TÜRKIYE SERVICE CENTER  
20,800 m<sup>2</sup>





▲ TAIWAN HQ & TUBE MILL  
54,000 m<sup>2</sup>



▲ TAIWAN SERVICE CENTER  
73,000 m<sup>2</sup>



▲ TAIWAN PIPE MILL I  
40,000 m<sup>2</sup>



▲ TAIWAN PIPE MILL II  
68,000 m<sup>2</sup>

# Milestone 公司沿革

- **2024** Solar energy generation output increased from 5.5 MWp (2022) to 11.54 MWp  
YC TR Pipe Mill was launched
- **2023** Certified by 3-A  
Expanded sanitary tube size range up to 8"
- **2022** YC TR Service Center & Tube Mill were launched
- **2019** YC INOX TR Celik Sanayi ve Ticaret A.S.™ was established
- **2012** Rebranded as YC INOX™
- **2004** Coil Service Center was launched
- **1999** Listed in Taiwan Stock Exchange Market (TPE: 2034)
- **1973** YEUN CHYANG™ (later known as YC INOX™) was founded with the initial production of welded pipes & tubes







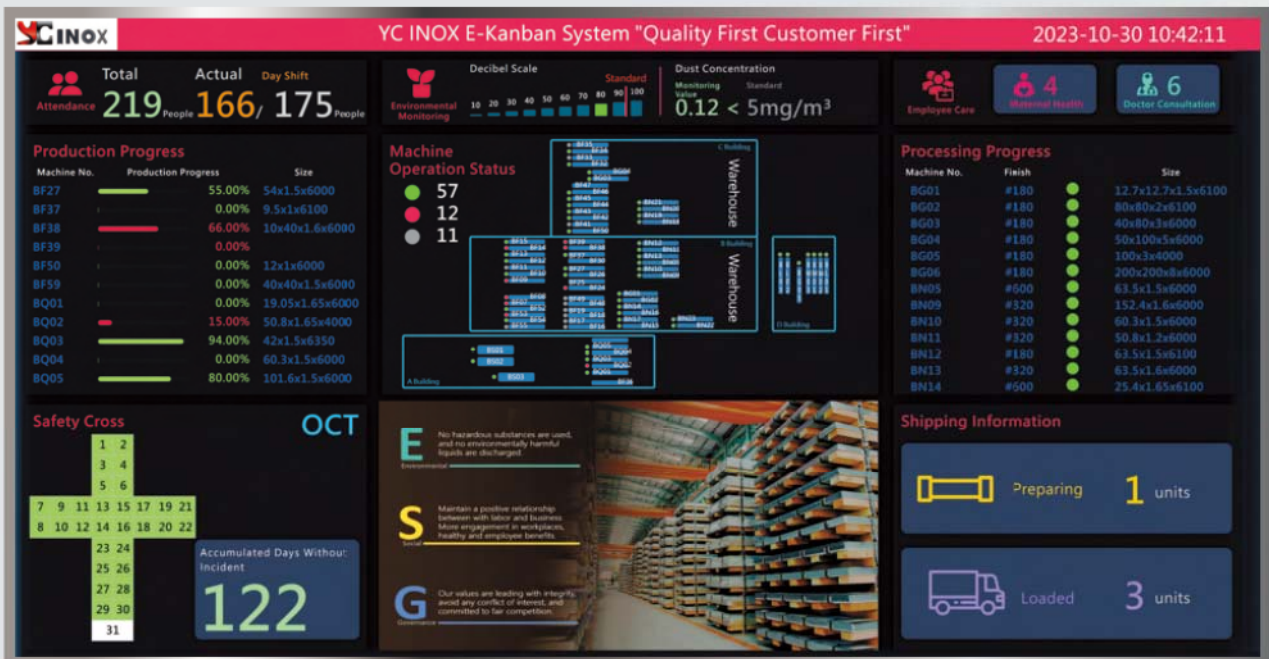
- **2024** 太陽能光電發電總容量由2022年的5.5 MWp增加至11.54 MWp  
土耳其配管廠開始量產
- **2023** 3-A產品認證  
食品衛生管尺寸擴大至8英吋
- **2022** 土耳其裁剪中心與構造管廠運作生產
- **2019** 成立允強土耳其鋼鐵工貿公司
- **2012** YEUN CHYANG™正式更名為YC INOX™
- **2004** 成立不銹鋼裁剪中心
- **1999** 股票公開掛牌上市 (股票代號 : 2034)
- **1973** 允強公司成立, 專業製造銷售銲接不銹鋼管

# Quality Oriented 品質導向

YC INOX is committed to providing high-quality products and meeting customer needs. The factory and production process have passed various international certifications to ensure and stabilize product quality.

YC INOX 致力於提供高品質產品並滿足顧客需求。廠區及生產流程通過多項國際驗證以確保穩定產品品質。

## e-Kanban 電子看板



## Real-Time Energy Monitoring 即時能源監控





## Management System

- **ISO 9001** Quality Management
- **ISO 3834** Welding Management
- **PED & AD2000** Pressure Purpose
- **ISO 17025** Testing Laboratory
- **ISO 14001** Environmental Management
- **ISO 14064-1** GHG Emissions
- **ISO 14067** Carbon Footprint of Products
- **ISO 50001** Energy Management
- **ISO 45001** Occupational Health & Safety Management
- **ISO 27001** Information Security Management



## Products Compliance / Manufacturer Approval

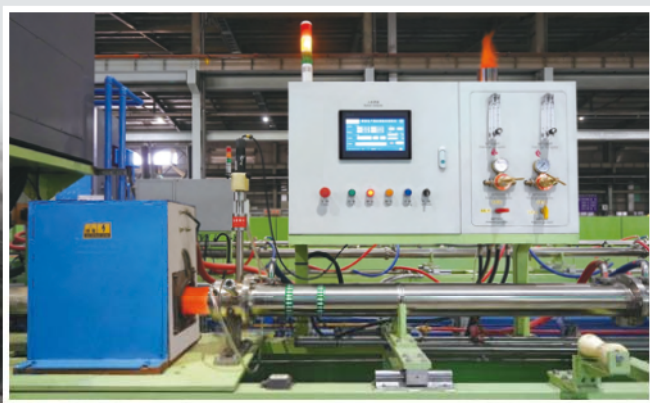


# Main Equipment 生產設備

Bright annealed process involves heating and rapid cooling the stainless steel tube in a controlled environment. Bright annealed tube has a clean, smooth, and bright surface with excellent corrosion resistance, high strength, and durability which is commonly used in industries such as pharmaceuticals, food, beverage, dairy farming and semiconductor manufacturing, where contamination must be minimized.

光輝退火是在受控氣氛爐中加熱和快速冷卻不銹鋼管。

光輝退火鋼管除了具有乾淨、光滑、明亮的表面，並且具有出色的耐腐蝕性、高強度和耐用性，通常被用於醫療、食品、酪農業和半導體製造...等對潔淨度有特別需求的行業。



▶ Bright Annealing Tube Mills 光輝退火製管機



▼ Pipe by Plate 線外製管機



▼ Green Facility 環保設備



▼ Automatic Warehouse 自動倉儲





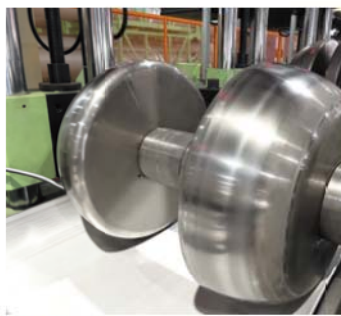
# Production Flow 生產流程

## Pipe / Tube by Coil $\varnothing \leq 20''$ & $t \leq 9.53$ mm



Hoops

鋼帶



Pipe / Tube Forming

製管

### Delivery Conditions 交貨條件



Annealing & Pickling

退火酸洗



Bright Annealing

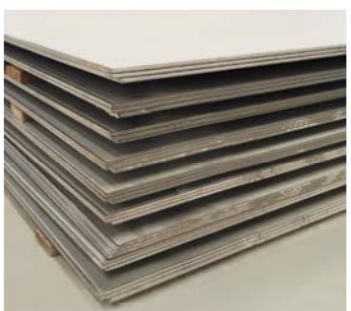
光輝退火



Bead Removal

內銲道整平

## Pipe by Plate $\varnothing > 20''$ $\varnothing \leq 20''$ & $t > 9.53$ mm



Plate

鋼板



Forming

成型



Annealing

退火





**Shipping**

出貨



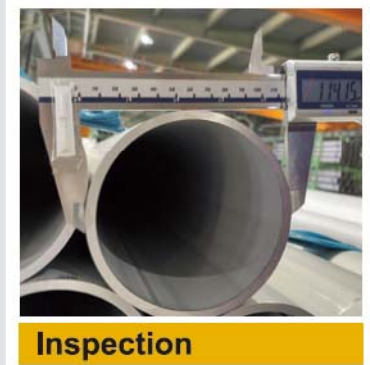
**Polishing / Grinding**

拋光



**Inside Polishing**

內拋



**Inspection**

查驗



**Sizing**

定徑



**Pickling**

酸洗



# Specification 鋼管規格

## Stainless Steel Welded Pipes

工業配管用有縫不銹鋼鋼管

**ASTM A312 / A312M, A358 / A358M, A778 / A778M, ASME B36.19 / B36.10**

Outside Diameter		ASME B36.19 Thickness (mm)				ASME B36.10 Thickness (mm)				
inch	mm	SCH-5S	SCH-10S	SCH-40S	SCH-80S	SCH-5	SCH-10	SCH-20	STD	XS
1/4	13.7	-	1.65	2.24	-	-	1.65	-	2.24	-
3/8	17.1	-	1.65	2.31	-	-	1.65	-	2.31	-
1/2	21.3	1.65	2.11	2.77	3.73	1.65	2.11	-	2.77	3.73
3/4	26.7	1.65	2.11	2.87	3.91	1.65	2.11	-	2.87	3.91
1	33.4	1.65	2.77	3.38	4.55	1.65	2.77	-	3.38	4.55
1 1/4	42.2	1.65	2.77	3.56	4.85	1.65	2.77	-	3.56	4.85
1 1/2	48.3	1.65	2.77	3.68	5.08	1.65	2.77	-	3.68	5.08
2	60.3	1.65	2.77	3.91	5.54	1.65	2.77	-	3.91	5.54
2 1/2	73.0	2.11	3.05	5.16	7.01	2.11	3.05	-	5.16	7.01
3	88.9	2.11	3.05	5.49	7.62	2.11	3.05	-	5.49	7.62
3 1/2	101.6	2.11	3.05	5.74	8.08	2.11	3.05	-	5.74	8.08
4	114.3	2.11	3.05	6.02	8.56	2.11	3.05	-	6.02	8.56
5	141.3	2.77	3.40	6.55	-	2.77	3.40	-	6.55	-
6	168.3	2.77	3.40	7.11	-	2.77	3.40	-	7.11	-
8	219.1	2.77	3.76	8.18	-	2.77	3.76	6.35	8.18	-
10	273.1	3.40	4.19	9.27	-	3.40	4.19	6.35	9.27	-
12	323.9	3.96	4.57	9.53	12.70	3.96	4.57	6.35	9.53	12.70
14	355.6	3.96	4.78	9.53	12.70	3.96	6.35	7.92	9.53	12.70
16	406.4	4.19	4.78	9.53	12.70	4.19	6.35	7.92	9.53	12.70
18	457	4.19	4.78	9.53	12.70	4.19	6.35	7.92	9.53	12.70
20	508	4.78	5.54	9.53	12.70	4.78	6.35	9.53	9.53	12.70
22	559	4.78	5.54	-	-	4.78	6.35	9.53	9.53	12.70
24	610	5.54	6.35	9.53	12.70	5.54	6.35	9.53	9.53	12.70
26	660	-	-	-	-	-	7.92	12.70	9.53	12.70
28	711	-	-	-	-	-	7.92	12.70	9.53	12.70
30	762	6.35	7.92	-	-	6.35	7.92	12.70	9.53	12.70
32-84	813-2134	Thickness : 6.35-30mm								



## Stainless Steel Pipes / Large Diameter Stainless Steel Pipes

工業配管用不銹鋼鋼管 / 大管徑配管用不銹鋼鋼管

### JIS G3459, CNS 6331 / JIS G3468, CNS 13517

Nominal Diameter		Outside Diameter	JIS G3459, CNS 6331				JIS G3468, CNS13517				Other Common Thickness
A	B	mm	SCH-5S	SCH-10S	SCH-20S	SCH-40	SCH-5S	SCH-10S	SCH-20S	SCH-40	
8	1/4	13.8	1.2	1.65	2.0	2.2	-	-	-	-	2.5
10	3/8	17.3	1.2	1.65	2.0	2.3	-	-	-	-	1.5 / 2.5
-	-	20.4	-	-	-	-	-	-	-	-	2.0 / 2.5
15	1/2	21.7	1.65	2.1	2.5	2.8	-	-	-	-	2.0 / 3.0 / 3.2
-	-	26.4	-	-	-	-	-	-	-	-	2.0 / 2.5 / 3.0
20	3/4	27.2	1.65	2.1	2.5	2.9	-	-	-	-	2.0 / 2.8 / 3.0 / 3.2
-	-	33.4	-	-	-	-	-	-	-	-	2.0 / 2.5 / 3.0
25	1	34.0	1.65	2.8	3.0	3.4	-	-	-	-	2.0 / 2.5 / 3.5 / 4.0
32	1 1/4	42.7	1.65	2.8	3.0	3.6	-	-	-	-	2.0 / 2.5 / 3.5 / 4.0 / 4.5 / 5.0
40	1 1/2	48.6	1.65	2.8	3.0	3.7	-	-	-	-	1.5 / 2.0 / 2.5 / 3.5 / 4.0 / 4.5 / 5.0
50	2	60.5	1.65	2.8	3.5	3.9	-	-	-	-	2.0 / 2.5 / 3.0 / 4.0 / 4.5 / 5.0
65	2 1/2	76.3	2.1	3.0	3.5	5.2	-	-	-	-	2.0 / 2.5 / 4.0 / 5.0 / 5.5
80	3	89.1	2.1	3.0	4.0	5.5	-	-	-	-	2.0 / 2.5 / 3.5 / 4.5 / 5.0 / 6.0
90	3 1/2	101.6	2.1	3.0	4.0	5.7	-	-	-	-	2.0 / 2.5 / 3.5 / 5.0 / 6.0
100	4	114.3	2.1	3.0	4.0	6.0	-	-	-	-	2.0 / 2.5 / 3.5 / 4.5 / 5.0 / 6.5
125	5	139.8	2.8	3.4	5.0	6.6	-	-	-	-	2.5 / 3.0 / 3.5 / 4.0 / 5.5 / 6.0 / 6.5
150	6	165.2	2.8	3.4	5.0	7.1	2.8	3.4	5.0	7.1	3.0 / 3.5 / 4.0 / 5.5 / 6.0 / 6.5 / 7.0
200	8	216.3	2.8	4.0	6.5	8.2	2.8	4.0	6.5	8.2	3.0 / 3.5 / 4.5 / 5.0 / 6.0 / 7.0 / 8.0
250	10	267.4	3.4	4.0	6.5	9.3	3.4	4.0	6.5	9.3	3.0 / 3.5 / 4.5 / 5.0 / 6.0 / 7.0
300	12	318.5	4.0	4.5	6.5	10.3	4.0	4.5	6.5	10.3	3.0 / 3.5 / 5.0 / 6.0 / 7.0
350	14	355.6	-	-	-	11.1	4.0	5.0	8.0	11.1	6.0
400	16	406.4	-	-	-	12.7	4.5	5.0	8.0	12.7	4.0 / 6.0
450	18	457.2	-	-	-	14.3	4.5	5.0	8.0	14.3	4.0
500	20	508.0	-	-	-	15.1	5.0	5.5	9.5	15.1	-
550	22	558.8	-	-	-	15.9	5.0	5.5	9.5	15.9	-
600	24	609.6	-	-	-	17.5	5.5	6.5	9.5	17.5	-
650	26	660.4	-	-	-	18.9	5.5	8.0	12.7	-	-
700	28	711.2	-	-	-	-	5.5	8.0	12.7	-	-
750	30	762.0	-	-	-	-	6.5	8.0	12.7	-	-
800	32	812.8	-	-	-	-	-	8.0	12.7	-	-
850	34	863.6	-	-	-	-	-	8.0	12.7	-	-
900	36	914.4	-	-	-	-	-	8.0	12.7	-	-
1000	40	1016.0	-	-	-	-	-	9.5	14.3	-	-

# Specification 鋼管規格

## Welded Stainless Steel Sanitary Tubing for Boiler, Heat-Exchanger & General Service

食品衛生用不銹鋼鋼管 / 鍋爐熱交換器用不銹鋼鋼管

**ASTM A249 / A269 / A270, AS 1528.1, JIS G3447 / G3463, CNS 6668 / 7383**

Standard	Thickness (mm)		0.9	1.0	1.2	1.25	1.5	1.6	1.65	2.0	2.11	2.5	2.77 2.85	3.0 3.05
	Outside Diameter													
	inch	mm												
ASTM A249 A269 A270	1/2	12.7	√											
	5/8	15.9	√	√	√	√	√	√	√					
	3/4	19 / 19.05	√	√	√	√	√	√	√					
	7/8	22 / 22.2	√	√	√	√	√	√	√	√				
	1	25 / 25.4	√	√	√	√	√	√	√	√	√			
	-	28	√	√	√	√	√	√	√	√	√			
	1 1/4	31.8 / 32	√	√	√	√	√	√	√	√	√			
	-	35	√	√	√	√	√	√	√	√	√			
	1 1/2	38 / 38.1	√	√	√	√	√	√	√	√	√			
	2	50.8 / 51	√	√	√	√	√	√	√	√	√			
	-	52			√	√	√	√	√	√	√			
	2 1/2	63.5			√	√	√	√	√	√	√	√		
	-	70			√	√	√	√	√	√	√	√		
	3	76.1 / 76.2			√	√	√	√	√	√	√	√		
	-	85			√	√	√	√	√	√	√	√		
	3 1/2	88.9					√	√	√	√	√	√		
	4	101.6					√	√	√	√	√	√		
	-	104					√	√	√	√	√	√		
4 1/2	114.3					√	√	√	√	√	√			
5	127 / 129					√	√	√	√	√	√	√	√	
6	152.4 / 154					√	√	√	√	√	√	√	√	
8	203.2 / 204							√	√	√	√	√	√	
AS 1528.1	1/2	12.7	√											
	5/8	15.88	√	√	√	√	√	√	√					
	3/4	19.05	√	√	√	√	√	√	√					
	7/8	22.23	√	√	√	√	√	√	√	√				
	1	25.4	√	√	√	√	√	√	√	√	√			
	1 1/4	31.75	√	√	√	√	√	√	√	√	√			
	-	34.93	√	√	√	√	√	√	√	√	√			
	1 1/2	38.1	√	√	√	√	√	√	√	√	√			
	2	50.8	√	√	√	√	√	√	√	√	√			
	2 1/2	63.5			√	√	√	√	√	√	√	√		
	3	76.2			√	√	√	√	√	√	√	√		
	4	101.6					√	√	√	√	√	√		
	5	127					√	√	√	√	√	√	√	√
	6	152.4					√	√	√	√	√	√	√	√
8	203.2							√	√	√	√	√	√	
Remark			(1) Inside Bead Removal : Outside Polishing Grit 180/320/400 ( $\phi \leq 114.3\text{mm}$ ), Inside Polishing Grit 320 ( $\phi 19\sim 129\text{mm}$ ) (2) Non Inside Bead Removal : Outside Polishing Grit 180/320/400 ( $\phi \leq 114.3\text{mm}$ ) / 600 ( $\phi \leq 101.6\text{mm}$ ) (3) JIS G3447 / G3463, CNS 6668 / 7383 : Capability Same as ASTM											



# Welded Stainless Steel Tubes for Pressure Purposes, Food and Chemical Industry

歐規不銹鋼鋼管

## EN 10217-7, EN 10357

Standard Outside Diameter (mm)	Thickness (mm)	EN 10217-7												EN 10357						
		1.0	1.2	1.5	1.6 1.65	2.0	2.5 2.6	3.0	3.2 3.5 3.6	4.0	5.0	6.0	8.0	9.0	1.0	1.2	1.5 1.6 1.65	2.0	2.11	2.77
10		□	□	□																
12		○	○	○	○															
14 / 15		○	○	○	○	○														
16		○	○	○	○	○														
17.2		△	△	△	△	△	△													
18 / 20		○	○	○	○	○														
19 / 19.05		○	○	○	○	○									□	□	□	□		
21.3		○	○	○	○	○	○	○												
22		○	○	○	○	○									□	□	□			
25 / 25.4		○	○	○	○	○	○	○							□	□	□	□	□	
26.9		○	○	○	○	○	○	○												
28		○	○	○	○	○	○	○							□	□	□	□		
30		○	○	○	○	○	○	○												
31.8 / 32		○	○	○	○	○	○	○							□	□	□	□	□	
33.7		○	○	○	○	○	○	○	*	*										
35		○	○	○	○	○	○	○							□	□	□	□	□	
38 / 38.1		○	○	○	○	○	○	○							□	□	□	□	□	
40		○	○	○	○	○	○	○												
42.4		○	○	○	○	○	○	○	*	*	*									
44.5		○	○	○	○	○	○	○												
48.3			○	○	○	○	○	○	*	*	*									
50.8 / 51			○	○	○	○	○	○							□	□	□	□	□	
54 / 57			○	○	○	○	○	○												
60.3			○	○	○	○	○	○	*	*	*									
63.5			○	○	○	○	○	○								□	□	□	□	□
70			○	○	○	○	○	○								□	□	□	□	□
76.1 / 76.2			○	○	○	○	○	○	*	*	*					□	□	□	□	□
85				○	○	○	○	○								□	□	□	□	□
88.9				○	○	○	○	○	*	*	*	*								
101.6				○	○	○	○	○	*	*	*	*				□	□	□	□	□
104				○	○	○	○	○								□	□	□	□	□
114.3				○	○	○	○	○	*	*	*	*								
129				△	△	△	△	△								△	△	△	△	△
139.7				△	△	△	△	△	*	*	*	*								
152.4				△	△	△	△	△								△	△	△	△	△
154				△	△	△	△	△								△	△	△	△	△
168.3					△	△	△	△	*	*	*	*								
204					△	△	△	△									△	△	△	△
219.1					*	*	*	*	*	*	*	*	*							
273-323.9																				
355.6-406.4																				
457-508																				
Remark	(1) □ : Annealing + Pickling    □ : Bright Annealing (2) * : Grit 180    △ : Grit 180 / 320    □ : Grit 180/320/400    ○ : Grit 180 / 320 / 400 / 600 (3) EN 10357 : Inside Polishing Grit 320 available (Outside Diameter : 19~129mm)																			

# Specification 鋼管規格

## Stainless Steel Tubing for Mechanical and Structural Purposes

機械構造用不銹鋼鋼管

ASTM A554, JIS G3446, CNS 5802

Thickness (mm)		0.8	0.9	1.0	1.2 1.25	1.5	1.6 1.65	2.0	2.11	2.5 3.0 3.05	4.0 5.0
Outside Diameter											
inch	mm										
3/8	9.5 / 10	□	□	□	□	□					
1/2	12 / 12.7	○	○	○	○	○	○				
-	14 / 15	○	○	○	○	○	○	○			
5/8	15.9 / 16	○	○	○	○	○	○	○			
-	18	○	○	○	○	○	○	○			
3/4	19.05(19)	○	○	○	○	○	○	○	○		
-	20	○	○	○	○	○	○	○	○		
-	21.3	○	○	○	○	○	○	○	○	○	
7/8	22 / 22.2	○	○	○	○	○	○	○	○	○	
1	25 / 25.4	○	○	○	○	○	○	○	○	○	
-	26.9	○	○	○	○	○	○	○	○	○	
1 1/8	28 / 28.6	○	○	○	○	○	○	○	○	○	
-	30	○	○	○	○	○	○	○	○	○	
1 1/4	31.8(31.75) / 32	○	○	○	○	○	○	○	○	○	
-	33.7	○	○	○	○	○	○	○	○	○	*
-	35	○	○	○	○	○	○	○	○	○	
1 1/2	38 / 38.1	○	○	○	○	○	○	○	○	○	
1 5/8	40 / 41.28		○	○	○	○	○	○	○	○	
-	42		○	○	○	○	○	○	○	○	
-	42.4		○	○	○	○	○	○	○	○	*
1 3/4	44.45(44.5) / 45		○	○	○	○	○	○	○	○	
1.9	48.26 / 48.3		○	○	○	○	○	○	○	○	*
2	50 / 50.8 / 51		○	○	○	○	○	○	○	○	
2 1/8	54				○	○	○	○	○	○	
2 1/4	57				○	○	○	○	○	○	*
-	60.3				○	○	○	○	○	○	*
2 1/2	63.5				○	○	○	○	○	○	*
2 3/4	70				○	○	○	○	○	○	*
3	76.1 / 76.2				○	○	○	○	○	○	*
3 1/2	88.9					○	○	○	○	○	*
4	101.6					○	○	○	○	○	*
4 1/2	114.3					○	○	○	○	○	*
5	127					△	△	△	△	△	
5 1/2	139.7					△	△	△	△	△	*
6	152.4					△	△	△	△	△	
-	168.3							△	△	△	*
8	203.2							△	△	△	
Remark		* : Grit 180US / 180    △ : Grit 180US / 180 / 320    □ : Grit 180US / 180 / 320 / 400 ○ : Grit 180US / 180 / 320 / 400 / 600 Outside Diameter ≤ 63.5mm : HS Grit 180									



# Stainless Steel Square Tubing

方管

## ASTM A554, CNS 5802

Outside Diameter		Thickness (mm)										
		0.8	0.9	1.0	1.2 1.25	1.5 1.6 1.65	2.0 2.11	2.5 2.77	3.0 3.05	4.0 4.57 5.0	6.0 6.35	8.0
inch	mm											
-	10x10	△	△	△	△	△						
1/2x1/2	12.7x12.7	△	△	△	△	△						
-	15x15 / 18x18	□	□	□	□	□						
3/4x3/4	19x19	□	□	□	□	□	□					
-	20x20	□	□	□	□	□	□					
7/8x7/8	22.2x22.2	□	□	□	□	□	□					
1x1	25x25 / 25.4x25.4	□	□	□	□	□	□	□	□			
-	30x30	□	□	□	□	□	□	□	□			
1 1/4x1 1/4	31.8x31.8		□	□	□	□	□	□	□			
-	35x35		□	□	□	□	□	□	□			
1 1/2x1 1/2	38.1x38.1		□	□	□	□	□	□	□	*		
-	40x40			□	□	□	□	□	□			
2x2	50x50 / 50.8x50.8				□	□	□	□	□	*	*	
-	60x60					□	□	□	□	*		
2 1/2x2 1/2	63.5x63.5					□	□	□	□	*	*	
-	70x70					□	□	□	□	*	*	
3x3	75x75 / 76.2x76.2					□	□	□	□	*	*	
-	80x80					□	□	□	□	*	*	
-	90x90						□	□	□	*	*	
4x4	100x100 / 101.6x101.6						□	□	□	*	*	
-	120x120								*	*	*	
6x6	150x150 / 152.4x152.4								*	*	*	*
8x8	200x200 / 203.2x203.2								*	*	*	*

Remark

(1) \*: Grit 180 △ : Grit 180 / 320 □ : Grit 180 / 320 / 400  
 (2) Outside Diameter ≤ 101.6mm : Grit 180US, HS Grit 180 / 240



# Specification 鋼管規格

## Stainless Steel Rectangular Tubing

扁方管

### ASTM A554, CNS 5802

Outside Diameter		Thickness (mm)									
		0.8	0.9	1.0	1.2 1.25	1.5 1.6 1.65	2.0 2.11	2.5 2.77	3.0 3.05	4.0 4.57 5.0	6.0 6.35
inch	mm										
-	10x20	□	□	□	□	□					
-	12x25		□	□	□	□					
-	10x(30/40/50)		□	□	□	□					
-	15x(25/30)		□	□	□	□	□				
3/4x1 1/2	19.05x38.1		△	△	△	△	△				
-	20x(30/40)		□	□	□	□	□				
-	22.4x28.3			□	□	□	□				
1x1 1/2	25x38 / 25.4x38.1			△	△	△	△	△	△		
-	30x(40/50)			□	□	□	□	□	□		
1x2	25x50 / 25.4x50.8			□	□	□	□	□	□		
-	30x60			□	□	□	□	□	□	*	
1x3	25x75 / 25.4x76.2				□	□	□	□	□		
-	20x(60/80)				□	□	□				
-	40x60				□	□	□	□	□		
-	40x80 / 45x75					□	□	□	□	*	
-	45x95 / 50x100					□	□	□	□	*	*
2x(3/4)	50.8x(76.2/101.6)					□	□	□	□	*	*
2x6	50x150 / 50.8x152.4						□	□	□	*	*
-	60x120						□	□	□	*	*
4x6	100x150 / 101.6x152.4								△	*	*
4x8	100x200 / 101.6x203.2								△	*	*
Remark		(1) *: Grit 180 △: Grit 180 / 320 □: Grit 180 / 320 / 400 (2) Outside Diameter ≤ 101.6mm : Grit 180US, HS Grit 180 / 240									

## Light Gauge Stainless Steel Tubes for Ordinary Piping

一般配管用不銹鋼鋼管(壓接管)

### EN 10312

Outside Diameter	mm	12.0	15.0	18.0	22.0	28.0	35.0	42.0	54.0	76.1	88.9	219.0	267.0
Thickness (mm)		1.0	1.0	1.0	1.2	1.2	1.5	1.5	1.5	2.0	2.0	3.0	3.0

### JIS G3448, CNS 13392

Outside Diameter	Su	13	20	25	30	40	50	60	75
	mm		15.88	22.22	28.58	34.0	42.7	48.6	60.5
Thickness (mm)		0.8	1.0	1.0	1.2	1.2	1.2	1.5	1.5

Outside Diameter	Su	80	100	125	150	200	250	300
	mm		89.1	114.3	139.8	165.2	216.3	267.4
Thickness (mm)		2.0	2.0	2.0	3.0	3.0	3.0	3.0



# Specification 其他產品規格

## Stainless Steel Flat Bar

不銹鋼扁鐵

### ASTM A276 / A484M

Thickness (mm) Width (mm)	2.0	3.0 3.18	4.0	4.5 4.76	5.0	6.0 6.35	8.0 7.94	9.0 9.53	10.0	12.0	13.0 12.7
	15										
20 / 25 / 25.4		✓	✓	✓	✓	✓					
30 / 31.8 / 32 / 35 / 38 / 38.1		✓	✓	✓	✓	✓					
40		✓	✓	✓	✓	✓	✓	✓	✓		
50 / 50.8		✓	✓	✓	✓	✓	✓	✓	✓	✓	
60 / 63.5 / 65		✓	✓	✓	✓	✓	✓	✓	✓	✓	
70 / 75 / 76.2		✓	✓	✓	✓	✓	✓	✓	✓	✓	
80 / 90 / 100 / 101.6		✓	✓	✓	✓	✓	✓	✓	✓	✓	✓
120 / 125 / 150 / 152.4		✓	✓	✓	✓	✓	✓	✓	✓	✓	✓
153~300											
Remark	(1) ✓ : HL Polishing Available (2) EN 10058 / EN 10088-3 : Thickness ≤ 6.35mm, Width ≤ 152.4mm										

## Stainless Steel Angle

不銹鋼角鐵

Dimensions	Thickness (mm)	1.5	2.0	2.5	3.0	4.0	5.0	6.0	8.0   9.0	10.0   13.0	15.0   16.0	20.0   22.0	25.0
		inch	mm										
3/4	20x20	✓	✓										
7/8	22x22	✓	✓										
1	25x25	✓	✓	✓	✓								
-	30x30	✓	✓	✓	✓								
-	40x40	✓	✓	✓	✓								
2	50x50		✓	✓	✓								
2 1/2	65x65												
3	75x75												
-	A x B				A ≥ 20 B ≥ 20	A ≥ 25 B ≥ 25	A ≥ 32 B ≥ 32	A ≥ 45 B ≥ 45	A ≥ 70 B ≥ 70	A ≥ 88 B ≥ 88	A ≥ 115 B ≥ 115	A ≥ 135 B ≥ 135	
Remark		✓ : Grit 180 / 400 Polishing Available (1) A, B Max. ≤ 737 (2) A=B or A≠B											

## Calculating Formula for the Value of Mass for Stainless Steel Tube & Pipe

不銹鋼鋼管重量計算公式表

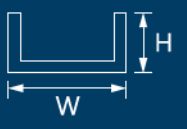
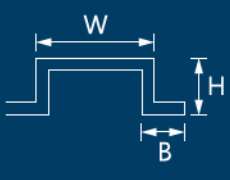
Grade					Basic Mass (kg/mm · m <sup>2</sup> )	Formula
304TP	TP 304	304L1TP	304L2TP	TP304L	7.93	W=0.02491t (D-t)
316TP	TP 316	316L1TP	316L2TP	TP316L	7.98	W=0.02507t (D-t)

W : Weight (kg/m) D : Outside Diameter (mm) t : Wall Thickness (mm)

# Specification 其他產品規格

## Stainless Steel U Channel

不銹鋼槽鐵

U Channel Type	Thickness (mm)		3.0	3.0	5.0/6.0	8.0/9.0	10.0	12.0/13.0	15.0~19.0	20.0~25.0	
	Height H (mm)	Min.	20	25	32	45	50	65	105	130	
		Max.	737								
	Width W (mm)		$W \geq (H+25+t)$								
	Edge Width B (mm)	Min.	20	25	32	45	65	65	-	-	
		Max.	50	50	50	100	100	100	-	-	
	Height H (mm)	Min.	140	140	140	200	200	200	-	-	
	Width W (mm)		$W \geq (H+25+t)$								-

## Chemical Composition of Stainless Steel Pipe

不銹鋼鋼管化學成份表

Standard & Grade		Chemical Composition (%)							Solution Heat Treating Condition	
		C	Si	Mn	P	S	Ni	Cr		Mo
ASTM A312	TP304	≤0.080	≤1.00	≤2.00	≤0.045	≤0.030	8.0~11.0	18.0~20.0	-	Annealing Requirement 1040°C Min. Water Quenching
	TP304L	≤0.035	≤1.00	≤2.00	≤0.045	≤0.030	8.0~13.0	18.0~20.0	-	
	TP316	≤0.080	≤1.00	≤2.00	≤0.045	≤0.030	10.0~14.0	16.0~18.0	2.0~3.0	
	TP316L	≤0.035	≤1.00	≤2.00	≤0.045	≤0.030	10.0~14.0	16.0~18.0	2.0~3.0	
JIS G3459	SUS304TP	≤0.080	≤1.00	≤2.00	≤0.045	≤0.030	8.0~11.0	18.0~20.0	-	Solution Treatment 1010°C Min. Rapid Cooling
	SUS304LTP	≤0.030	≤1.00	≤2.00	≤0.045	≤0.030	9.0~13.0	18.0~20.0	-	
	SUS316TP	≤0.080	≤1.00	≤2.00	≤0.045	≤0.030	10.0~14.0	16.0~18.0	2.0~3.0	
	SUS316LTP	≤0.030	≤1.00	≤2.00	≤0.045	≤0.030	12.0~16.0	16.0~18.0	2.0~3.0	
CNS 6331	304TP	≤0.080	≤1.00	≤2.00	≤0.045	≤0.030	8.0~11.0	18.0~20.0	-	Solution Treatment 1010°C Min. Rapid Cooling
	304L1TP	≤0.035	≤1.00	≤2.00	≤0.045	≤0.030	8.0~13.0	18.0~20.0	-	
	304L2TP	≤0.030	≤1.00	≤2.00	≤0.045	≤0.030	9.0~13.0	18.0~20.0	-	
	316TP	≤0.080	≤1.00	≤2.00	≤0.045	≤0.030	10.0~14.0	16.0~18.0	2.0~3.0	
	316L1TP	≤0.035	≤1.00	≤2.00	≤0.045	≤0.030	10.0~14.0	16.0~18.0	2.0~3.0	
	316L2TP	≤0.030	≤1.00	≤2.00	≤0.045	≤0.030	12.0~16.0	16.0~18.0	2.0~3.0	



# Tolerance 鋼管公差

## Stainless Steel Pipes

工業配管用不銹鋼鋼管

ASTM A312 / A312M, A358 / A358M, JIS G3459, CNS 6331, JIS G3468, CNS 13517

Item Standard	Outside Diameter	Thickness	Length
ASTM A312	O.D. ≤ 48.3mm $\begin{matrix} + 0.40\text{mm} \\ - 0.80\text{mm} \end{matrix}$	Nominal Thickness $\begin{matrix} + 15\% \\ - 12.5\% \end{matrix}$	L ≤ 7.3M $\begin{matrix} + 6.0\text{mm} \\ - 0\text{mm} \end{matrix}$
	48.3mm < O.D. ≤ 114.3mm $\begin{matrix} + 0.80\text{mm} \\ - 0.80\text{mm} \end{matrix}$		
	114.3mm < O.D. ≤ 219.1mm $\begin{matrix} + 1.60\text{mm} \\ - 0.80\text{mm} \end{matrix}$		
	219.1mm < O.D. ≤ 457mm $\begin{matrix} + 2.40\text{mm} \\ - 0.80\text{mm} \end{matrix}$		
	457mm < O.D. ≤ 660mm $\begin{matrix} + 3.20\text{mm} \\ - 0.80\text{mm} \end{matrix}$		
	660mm < O.D. ≤ 864mm $\begin{matrix} + 4.00\text{mm} \\ - 0.80\text{mm} \end{matrix}$		
	864mm < O.D. ≤ 1219mm $\begin{matrix} + 4.80\text{mm} \\ - 0.80\text{mm} \end{matrix}$		
ASTM A358	Based on circumferential measurement ± 0.5% Difference between major and minor outside diameters 1%	-0.3mm	L ≤ 7.3M $\begin{matrix} + 6.0\text{mm} \\ - 0\text{mm} \end{matrix}$
JIS G3459 CNS 6331	O.D. < 30.0mm ± 0.30mm O.D. ≥ 30.0mm ± 1%	< 2mm ± 0.20mm ≥ 2mm ± 10%	Definite Cut Lengths
JIS G3468 CNS 13517	O.D. ≤ 318.5mm (300A) ± 1% O.D. > 318.5mm (300A) ± 0.5%	< 8mm $\begin{matrix} + 15\% \\ - 12.5\% \end{matrix}$ ≥ 8mm $\begin{matrix} + 15\% \\ - 10\% \end{matrix}$	Definite Cut Lengths

## Light Gauge Stainless Steel Tubes for Ordinary Piping

一般配管用不銹鋼鋼管 (壓接管)

JIS G3448, CNS 13392

Item Standard	Outside Diameter	Thickness	Length
JIS G3448 CNS 13392	O.D. < 34.0mm $\begin{matrix} + 0\text{mm} \\ - 0.37\text{mm} \end{matrix}$	0.7~1.2mm ± 0.12mm 1.5mm ± 0.15mm 2.0mm ± 0.30mm 3.0mm ± 0.40mm	Definite Cut Lengths
	34.0mm ≤ O.D. < 42.7mm ± 0.34mm		
	42.7mm ≤ O.D. < 48.6mm ± 0.43mm		
	48.6mm ≤ O.D. < 60.5mm ± 0.49mm		
	60.5mm ≤ O.D. < 76.3mm ± 0.60mm		
	76.3mm ≤ O.D. ≤ 318.5mm ± 1%		

# Tolerance 鋼管公差

## Welded Austenitic Stainless Steel Tubes for Heat Exchanger, General Service & Sanitary Tubing

食品衛生用及鍋爐熱交換器用不銹鋼鋼管

ASTM A249 / A249M, A269 / A269M, A270 / A270M, JIS G3447 / G3463, CNS 6668 / 7383

Item Standard	Outside Diameter	Thickness	Length
ASTM A249	O.D. < 25mm + 0.10mm, -0.11mm	± 10%	O.D. < 50.8mm + 3.0mm - 0mm O.D. ≥ 50.8mm + 5.0mm - 0mm
	25mm ≤ O.D. ≤ 40mm ± 0.15mm		
	40mm < O.D. < 50mm ± 0.20mm		
	50mm ≤ O.D. < 65mm ± 0.25mm		
	65mm ≤ O.D. < 75mm ± 0.30mm		
	75mm ≤ O.D. ≤ 100mm ± 0.38mm		
	100mm < O.D. ≤ 200mm + 0.38mm, -0.64mm		
200mm < O.D. ≤ 225mm + 0.38mm, -1.14mm			
ASTM A269	O.D. < 38mm ± 0.13mm	O.D. < 13mm ± 15% O.D. ≥ 13mm ± 10%	O.D. < 38mm + 3.2mm - 0mm O.D. ≥ 38mm + 4.8mm - 0mm
	38mm ≤ O.D. < 89mm ± 0.25mm		
	89mm ≤ O.D. < 140mm ± 0.38mm		
	140mm ≤ O.D. < 203mm ± 0.76mm		
	203mm ≤ O.D. < 305mm ± 1.01mm		
ASTM A270	O.D. ≤ 25mm ± 0.13mm	± 12.5%	O.D. ≤ 100mm + 3.0mm - 0mm O.D. > 100mm + 5.0mm - 0mm
	25mm < O.D. ≤ 50mm ± 0.20mm		
	50mm < O.D. ≤ 75mm ± 0.25mm		
	75mm < O.D. < 140mm ± 0.38mm		
	140mm ≤ O.D. < 200mm ± 0.75mm		
	200mm ≤ O.D. ≤ 300mm ± 1.25mm		
CNS 6668 JIS G3447	O.D. < 31.8mm ± 0.15mm	t < 1.2mm ± 0.12mm t ≥ 1.2mm ± 10%	+ 10mm - 0mm
	31.8mm ≤ O.D. < 38.1mm ± 0.16mm		
	38.1mm ≤ O.D. < 50.8mm ± 0.19mm		
	50.8mm ≤ O.D. < 89.1mm ± 0.25mm		
	89.1mm ≤ O.D. < 101.6mm + 0.30mm, -0.40mm		
	101.6mm ≤ O.D. < 114.3mm + 0.35mm, -0.40mm		
	114.3mm ≤ O.D. < 139.8mm + 0.40mm, -0.60mm		
	139.8mm ≤ O.D. < 165.2mm + 0.40mm, -0.80mm		
	165.2mm ≤ O.D. + 0.40mm, -1.20mm		
CNS 7383 JIS G3463	O.D. < 60mm ± 0.25mm	O.D. < 40mm t < 2mm + 0.4mm - 0mm t ≥ 2mm + 20% - 0mm O.D. ≥ 40mm + 22% - 0mm	O.D. ≤ 50mm + 7.0mm - 0mm O.D. > 50mm + 10mm - 0mm
	60mm ≤ O.D. < 80mm ± 0.30mm		
	80mm ≤ O.D. < 100mm ± 0.40mm		
	100mm ≤ O.D. < 120mm + 0.40mm, -0.60mm		
	120mm ≤ O.D. < 160mm + 0.40mm, -0.80mm		
	160mm ≤ O.D. < 200mm + 0.40mm, -1.20mm		
	200mm ≤ O.D. + 0.40mm, -1.60mm		



## Welded Stainless Steel Tube for Pressure Purposes

歐規不銹鋼鋼管

### EN 10217-7

Item Standard	Outside Diameter		Thickness	Length
EN 10217-7	$D \leq 168.3\text{mm}$	$D3 \pm 0.75\%$ or $\pm 0.3\text{mm}$ whichever is the greater	$T3 \pm 10\%$ or $\pm 0.2\text{mm}$ whichever is the greater	$L \leq 6000$ + 5mm, -0mm $6000 < L \leq 12000$ +10mm, -0mm $L > 12000$ + by agreement, -0mm
	$D > 168.3\text{mm}$	$D2 \pm 1.0\%$		

## Stainless Steel Tubes for Mechanical & Structural Purposes

機械構造用不銹鋼鋼管

### ASTM A554, JIS G3446, CNS 5802

Unit: mm

Item Standard	Outside Diameter	Thickness	Length
ASTM A554	$O.D. < 12.7 \pm 0.10$ ( $t \leq 1.24$ )	$\pm 10\%$	$3M < L \leq 7.3M$ <sup>+4.8mm</sup> - 0mm
	$12.7 \leq O.D. \leq 25.4 \pm 0.13$ ( $t \leq 1.65$ ) / $\pm 0.25$ ( $t > 1.65$ )		
	$25.4 < O.D. \leq 38.1 \pm 0.20$ ( $t \leq 1.65$ ) / $\pm 0.25$ ( $t > 1.65$ )		
	$38.1 < O.D. \leq 50.8 \pm 0.25$ ( $t \leq 1.24$ ) / $\pm 0.28$ ( $1.24 < t \leq 2.11$ ) / $\pm 0.30$ ( $t > 2.11$ )		
	$50.8 < O.D. \leq 63.5 \pm 0.30$ ( $t \leq 1.65$ ) / $\pm 0.33$ ( $1.65 < t \leq 2.77$ ) / $\pm 0.36$ ( $t > 2.77$ )		
	$63.5 < O.D. \leq 88.9 \pm 0.36$ ( $t \leq 4.19$ ) / $\pm 0.51$ ( $t > 4.19$ )		
	$88.9 < O.D. \leq 127.0 \pm 0.51$ ( $t \leq 4.19$ ) / $\pm 0.64$ ( $t > 4.19$ )		
	$127.0 < O.D. \leq 190.5 \pm 0.64$ ( $t \leq 6.35$ ) / $\pm 0.76$ ( $t > 6.35$ )		
	$190.5 < O.D. \leq 406.4 \pm 0.00125 \times \text{circumference}$		
JIS G3446 CNS 5802	$O.D. < 50.0\text{mm} \pm 0.25\text{mm}$ $O.D. \geq 50.0\text{mm} \pm 0.5\%$	NO.1 NO.2 NO.3	+ 50mm - 0mm

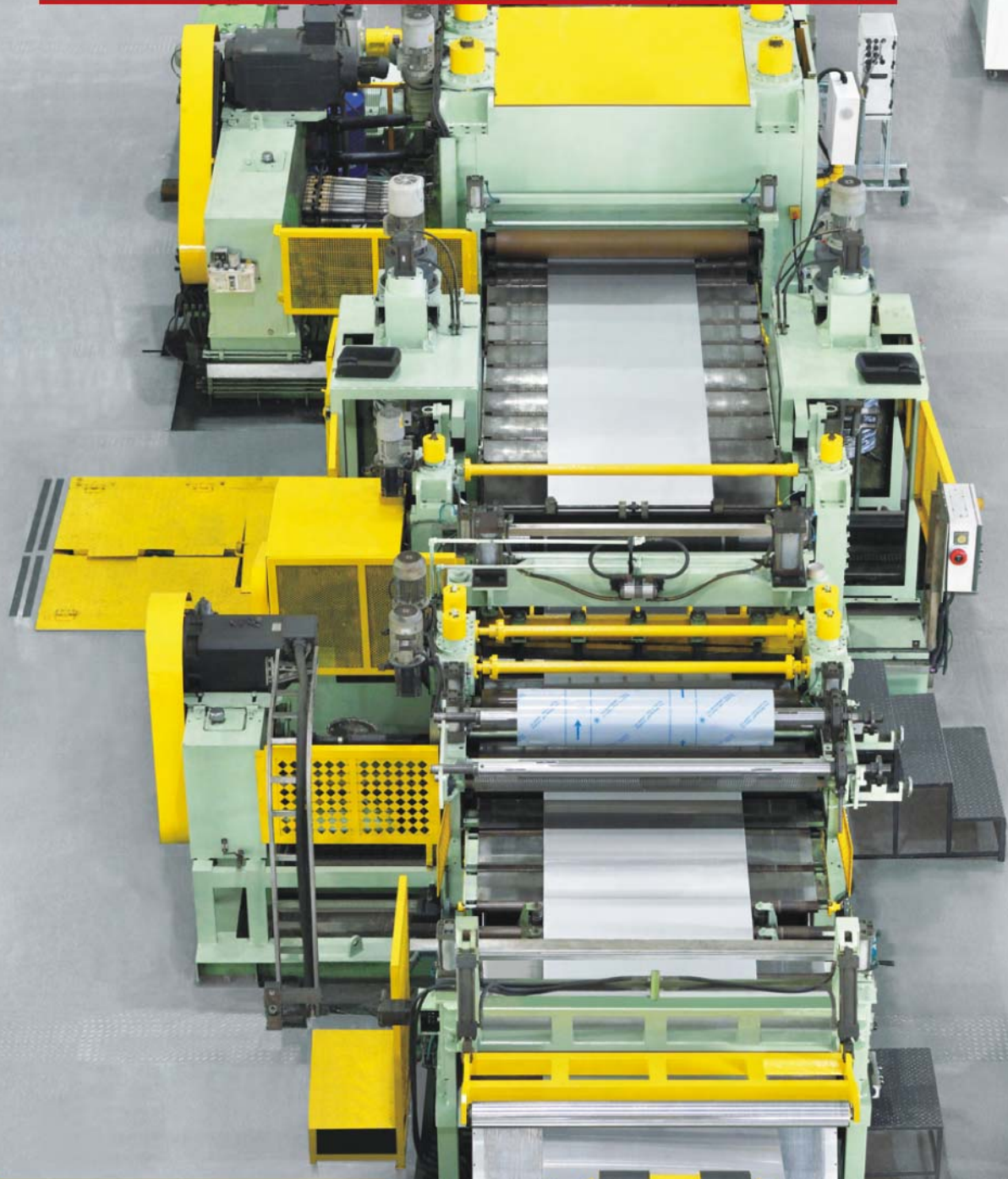
## Stainless Steel Square & Rectangular Tubes for Mechanical & Structural Purposes

機械構造用不銹鋼方管/扁方管

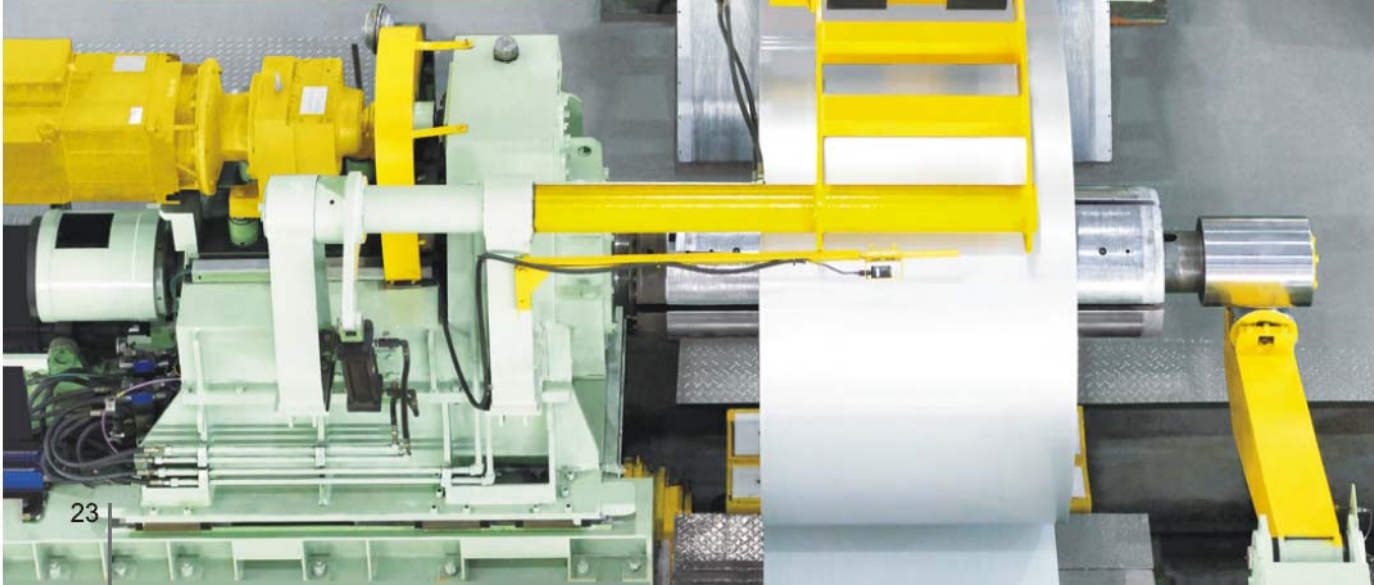
### ASTM A554, CNS 5802

Item Standard	Outside Diameter	Thickness	Length
ASTM A554 CNS 5802	$O.D. \leq 31.8\text{mm} \pm 0.38\text{mm}$	$\pm 10\%$	$3M < L \leq 7.3M$ <sup>+4.8mm</sup> - 0mm
	$31.8\text{mm} < O.D. \leq 63.5\text{mm} \pm 0.51\text{mm}$		
	$63.5\text{mm} < O.D. \leq 139.7\text{mm} \pm 0.76\text{mm}$	NO.1, NO.2, NO.3	+ 50mm - 0mm
	$139.7\text{mm} < O.D. \leq 203.2\text{mm} \pm 1.52\text{mm}$		

# Main Equipment 生產設備



▶ Cut to Length Line 鋼卷切板機







▶ Polishing Line 鋼捲拋砂機



▶ Slitting Line 鋼捲分條機



# Specification 鋼板 / 捲規格

## Stainless Steel HR / CR Coil / Sheet / Plate

不銹鋼熱 / 冷軋板、捲

ASTM A240 / A240M, A480 / A480M, JIS G4304 / G4305, EN 10028-7 / 10088-2 / 10088-4

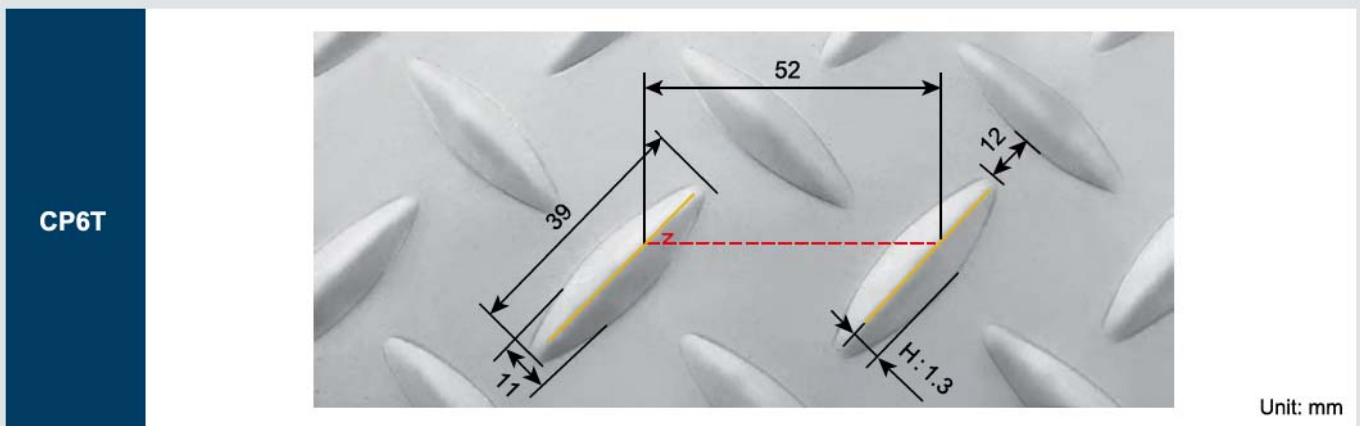
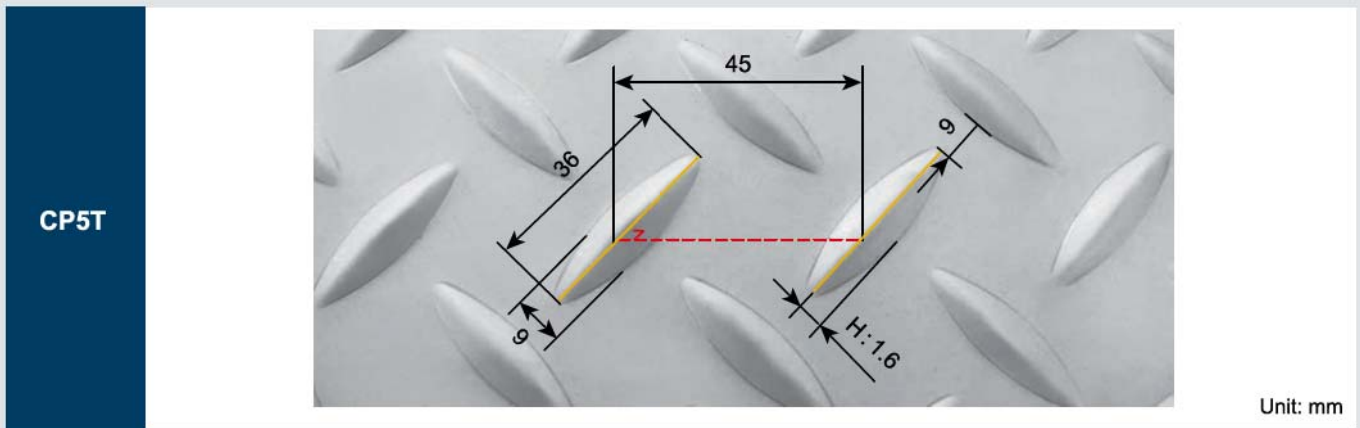
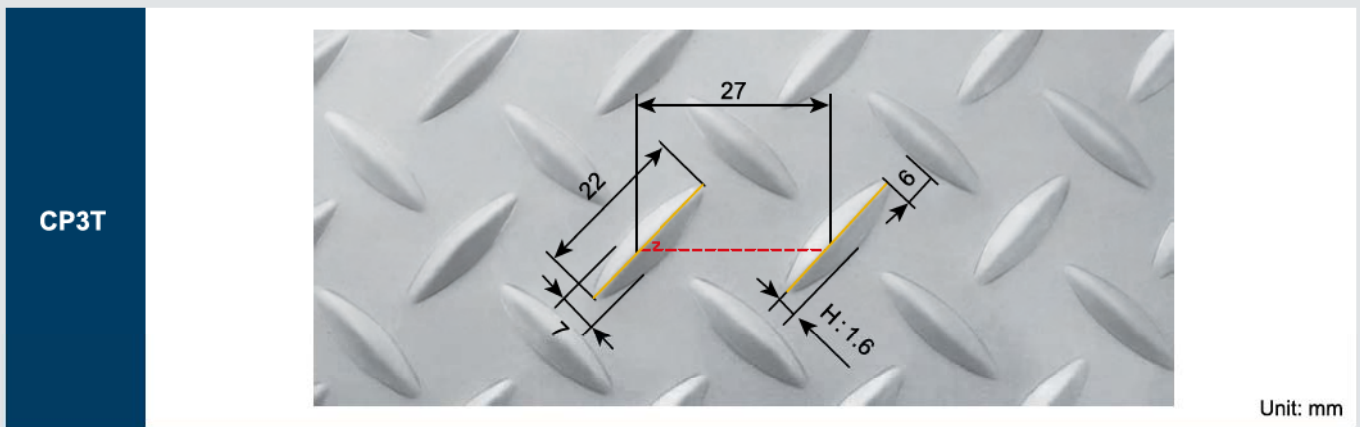
Product Type	Finish	Grade	Thickness (mm)	Width (mm)								
				Main Size								
				750	914	1000	1219	1250	1500	1524	2000	
Coil	NO.1	304 / L, 316L	$2.0 \leq t < 5.0$	*		*	*	*	*	*	*	
			$5.0 \leq t \leq 10.0$	*		*	*	*	*	*	*	*
			$10.0 < t \leq 12.7$			*	*	*	*	*	*	*
		430	$2.0 \leq t \leq 6.0$			*	*	*	*	*	*	
			409, 439	$3.0 \leq t \leq 6.0$			*	*	*	*	*	*
		2B	304 / L, 316L	$3.0 \leq t \leq 6.0$			*	*	*	*	*	
	2B NO.4 NO.5 HL SB	304 / L	$0.4 \leq t < 3.5$	*	*	*	*	*	*	*	*	
			316L, 430	$0.5 \leq t \leq 3.5$	*	*	*	*	*	*	*	
		409	$0.3 \leq t \leq 3.0$		*	*	*	*	*	*	*	
			$0.5 \leq t \leq 3.0$						*	*		
		439	$0.3 \leq t \leq 3.0$		*	*	*	*	*	*	*	
			$0.4 \leq t \leq 3.0$						*	*		
	BA	304 / L, 316L, 430	$0.4 \leq t \leq 2.0$		*	*	*	*				
NO.8	304 / L, 316L	$0.3 \leq t \leq 6.0$			*	*	*	*	*			
Sheet & Plate	NO.1	304 / L, 316L	$2.0 \leq t \leq 5.0$			*	*	*	*	*		
			$5.0 \leq t \leq 12.7$			*	*	*	*	*	*	
			$12.7 < t \leq 30.0$			*	*		*	*		
		$t > 30.0$	Upon Request									
	430	$2.0 \leq t \leq 6.0$			*	*	*	*	*			
		409, 439	$3.0 \leq t \leq 6.0$			*	*	*	*	*		
	2B	304, 316L	$3.0 \leq t \leq 6.0$			*	*	*	*	*		
	2B NO.4 NO.5 HL SB	304 / L	$0.4 \leq t \leq 3.5$	*	*	*	*	*	*	*	*	
			316L, 430	$0.5 \leq t \leq 3.5$	*	*	*	*	*	*	*	
		409	$0.3 \leq t \leq 3.0$		*	*	*	*	*	*	*	
			$0.5 \leq t \leq 3.0$						*	*		
		439	$0.3 \leq t \leq 3.0$		*	*	*	*	*	*	*	
			$0.4 \leq t \leq 3.0$						*	*		
BA	304 / L, 316L, 430	$0.4 \leq t \leq 2.0$		*	*	*	*					
NO.8	304 / L, 316L	$0.3 \leq t \leq 6.0$			*	*	*	*	*			
Remark	<p>Feature 產品特性</p> <ol style="list-style-type: none"> <li>1. Wet Polished (濕拋)</li> <li>2. Both-Sides Polished Available (可背拋)</li> <li>3. PE / LPE / FLPE Coating (貼膜)</li> <li>4. Line-Marking (噴字) Optional for Top / Back Side (正噴 / 背噴可供選擇)</li> <li>5. Other Sizes are Upon Requested ( CR Strip: Width <math>\geq</math> 25mm)</li> <li>6. Package Weight (包裝選擇) CR Coil 鋼捲: 1.0-10.0mts (噸) HR Coil 鋼捲 (1) 厚度(t): 3.0-6.0mm_2.0-10.0mts (噸) (2) 厚度(t): 7.0-10.0mm_5.0-20.0mts (噸) (3) 厚度(t): 12.0-12.7mm_10.0-20.0mts (噸) Sheet 鋼板: 1.0-2.2mts (噸) Plate 鋼板: 1.0-4.0mts (噸)</li> </ol>											



# Stainless Steel Cold Pressed Checker Plate

不銹鋼止滑板

Product Type	Finish	Surface NO.	Grade	Thickness (mm)	Width (mm)				
					Main Size				
					1000	1219	1250	1500	1524
Plate	2B NO.1	CP3T	304	2.0-3.0	*	*	*	*	*
		CP5T	304L	2.0-5.0	*	*	*	*	*
		CP6T	316L	2.0-6.0	*	*	*	*	*



# Tolerance 鋼板公差

## Stainless Steel HR Plate Tolerance (by cutting method)

熱軋不銹鋼鋼板公差

Unit: mm

Item Standard	Tolerance on Width				Tolerance on Length				Maximum Value of Flatness of Plate		
		T < 5	T ≥ 5 T ≤ 10	T > 10	L < 3000		+6.35 / -0			T < 5	T ≥ 5
ASTM A480 / A480M	W < 1200	+1.59 / -0	+3.97 / -0	+6 / -0	L ≥ 3000 L ≤ 6000		+12.7 / -0		W < 900	12.7	23
	W ≥ 1200	+6 / -0	+9 / -0	+11.1 / -0					W ≥ 900 W < 1500	19	23
									W ≥ 1500	25.4	30
JIS G4304 CNS 8497		L ≤ 3500	L > 3500 L ≤ 6000	L > 6000		L ≤ 3500	L > 3500 L ≤ 6000	L > 6000	W ≤ 1000	L ≤ 2000	15
										L > 2000	20
	T < 10	+5 / -0	+15 / -0	+20 / -0	T < 10	+10 / -0	+15 / -0	+30 / -0	W > 1000 W ≤ 1600		20
T ≥ 10 T < 20	+10 / -0	+20 / -0	+20 / -0	T ≥ 10 T < 20	+15 / -0	+20 / -0	+35 / -0				

## Stainless Steel CR Sheet Tolerance (by cutting method)

冷軋不銹鋼鋼板公差

Unit: mm

Item Standard	Tolerance on Width				Tolerance on Length				Maximum Value of Flatness of Sheet		
		T ≤ 1.5	T > 1.5 T ≤ 2.5	T > 2.5 T ≤ 3.5	L ≤ 2000		+4.8 / -0		W < 1500		10
ASTM A480 / A480M	W > 600 W < 1200	+1.5 / -0	+1.6 / -0	+1.6 / -0	L > 2000		+0.0025xL / -0		W ≥ 1500		12
	W ≥ 1200 W ≤ 2100	+2 / -0	+2.5 / -0	+3 / -0							
JIS G4305 CNS 8499		L ≤ 3500	L > 3500 L ≤ 6000	L > 6000		L ≤ 3500	L > 3500 L ≤ 6000	L > 6000	W ≤ 1000	L ≤ 2000	15
										L > 2000	20
	T < 10	+5 / -0	+15 / -0	+20 / -0	T < 10	+10 / -0	+15 / -0	+30 / -0	W > 1000		20
T ≥ 10 T ≤ 25	+10 / -0	+20 / -0	+20 / -0	T ≥ 10 T ≤ 25	+15 / -0	+20 / -0	+35 / -0				

# Chemical Composition of Stainless Steel Plates & Sheets

## 不銹鋼鋼板化學成分表

Unit: mm

Standard & Grade		Chemical Composition (%) 化學成分									Others
		C 碳	Si 矽	Mn 錳	P 磷	S 硫	Ni 鎳	Cr 鉻	Mo 鉬	N 氮	
ASTM A240	304	≤0.080	≤0.75	≤2.00	≤0.045	≤0.030	8.0~11.0	18.0~20.0	-	≤0.10	
	304L	≤0.030	≤0.75	≤2.00	≤0.045	≤0.030	8.0~12.0	18.0~20.0	-	≤0.10	
	316	≤0.080	≤0.75	≤2.00	≤0.045	≤0.030	10.0~14.0	16.0~18.0	2.0~3.0	≤0.10	
	316L	≤0.030	≤0.75	≤2.00	≤0.045	≤0.030	10.0~14.0	16.0~18.0	2.0~3.0	≤0.10	
	321	≤0.080	≤0.75	≤2.00	≤0.045	≤0.030	9.0~12.0	17.0~19.0	-	≤0.10	Ti: 0.70max. 5(C+N)min.
	409	≤0.030	≤1.00	≤1.00	≤0.040	≤0.020	≤0.50	10.5~11.7	-	≤0.030	Ti: 0.50max. 6(C+N)min. Nb: 0.17max.
	439	≤0.030	≤1.00	≤1.00	≤0.040	≤0.030	≤0.50	17.0~19.0	-	≤0.030	Ti: 1.10max. 0.20 + 4(C+N)min. Al: 0.15max.
	430	≤0.120	≤1.00	≤1.00	≤0.040	≤0.030	≤0.75	16.0~18.0	-	-	
JIS G4304 G4305	SUS304	≤0.080	≤1.00	≤2.00	≤0.045	≤0.030	8.0~10.5	18.0~20.0	-	-	
	SUS304L	≤0.030	≤1.00	≤2.00	≤0.045	≤0.030	9.0~13.0	18.0~20.0	-	-	
	SUS316	≤0.080	≤1.00	≤2.00	≤0.045	≤0.030	10.0~14.0	16.0~18.0	2.0~3.0	-	
	SUS316L	≤0.030	≤1.00	≤2.00	≤0.045	≤0.030	12.0~15.0	16.0~18.0	2.0~3.0	-	
	SUS321	≤0.080	≤1.00	≤2.00	≤0.045	≤0.030	9.0~13.0	17.0~19.0	-	-	Ti: 5C min.
	SUS430	≤0.120	≤0.75	≤1.00	≤0.040	≤0.030	≤0.60	16.0~18.0	-	-	
EN 10028-7 10088-2 10088-4	1.4301	≤0.070	≤1.00	≤2.00	≤0.045	≤0.015	8.0~10.5	17.5~19.5	-	≤0.10	
	1.4307	≤0.030	≤1.00	≤2.00	≤0.045	≤0.015	8.0~10.5	17.5~19.5	-	≤0.10	
	1.4401	≤0.070	≤1.00	≤2.00	≤0.045	≤0.015	10.0~13.0	16.5~18.5	2.0~2.5	≤0.10	
	1.4404	≤0.030	≤1.00	≤2.00	≤0.045	≤0.015	10.0~13.0	16.5~18.5	2.0~2.5	≤0.10	
	1.4509	≤0.030	≤1.00	≤1.00	≤0.040	≤0.015	-	17.5~18.5	-	-	Ti: 0.1~0.6 Nb: 0.3+3*C~1.0
EN 10088-2 10088-4	1.4016	≤0.080	≤1.00	≤1.00	≤0.040	≤0.015	-	16.0~18.0	-	-	

## Calculating Formula for the Value of Mass

### 不銹鋼鋼板重量計算公式表

Grade	Basic Mass (kg/mm · m <sup>2</sup> )	Calculating Formula for the Value of Mass Single Plate (kg)
304 / 304L	7.93	kg=7.93 (kg/mm · m <sup>2</sup> ) x Thickness (mm) x Width (M) x Length (M)
316 / 316L	7.98	kg=7.98 (kg/mm · m <sup>2</sup> ) x Thickness (mm) x Width (M) x Length (M)
409 / 439 / 430	7.70	kg=7.70 (kg/mm · m <sup>2</sup> ) x Thickness (mm) x Width (M) x Length (M)



# Pipe / Tube Marking & Packaging 鋼管噴字及包裝

YC INOX ASTM A270 TP316L WLD 4"×2.0mm×6M HEAT NO.VXXXXXXXXX TAIWAN 

**ASTM A270**

YC INOX ASTM A312/A312M TP316L WLD 8"×SCH-10S×6M HEAT NO.VXXXXXXXXX TAIWAN NSF-61-G

**ASTM A312**

YC INOX JIS G3459 SUS304TP-A 60.5mm×2.8mm×6M HEAT NO.VXXXXXXXXX TAIWAN  JQA JQTW10002

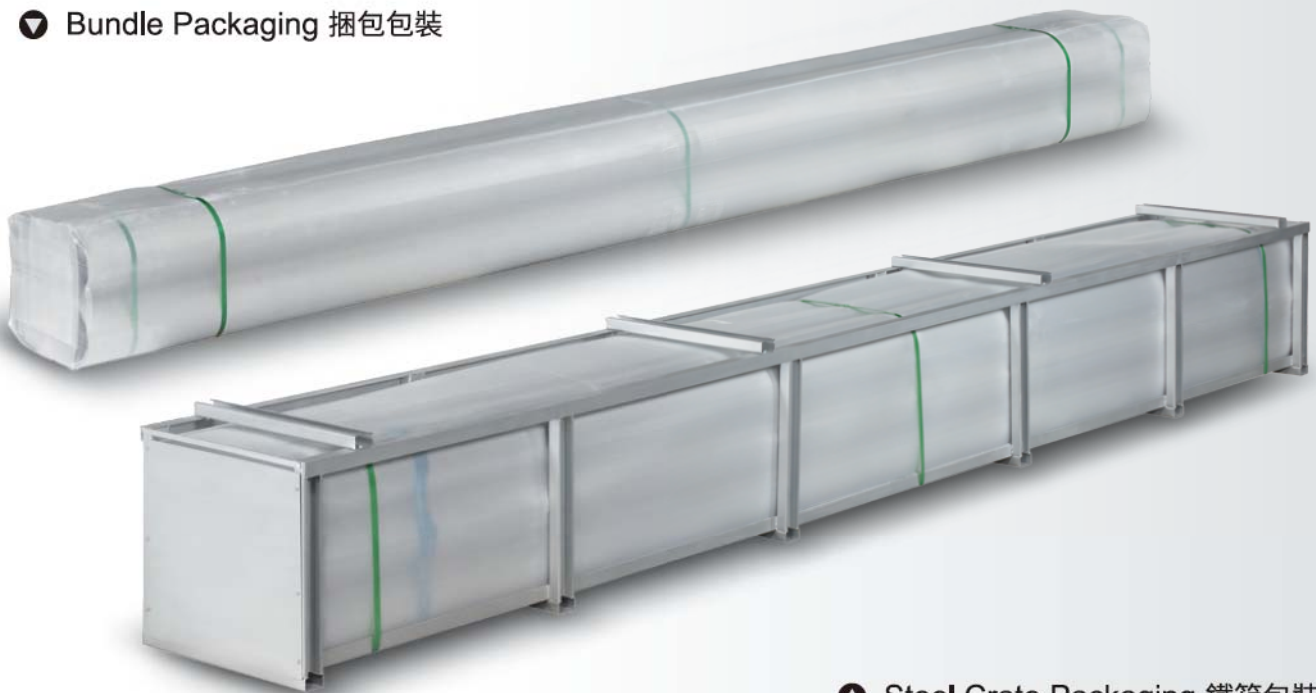
**JIS G3459**

YC INOX EN 10217-7 TC2 W2A 1.4404 26.9mm×2.0mm×6M HEAT NO.VXXXXXXXXX TAIWAN

**EN 10217-7**

▲ Pipe / Tube Marking 鋼管噴字

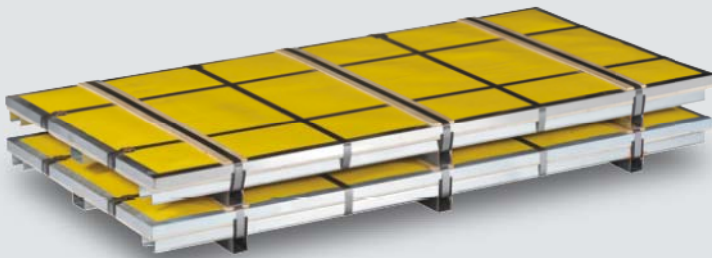
▼ Bundle Packaging 捆包包裝



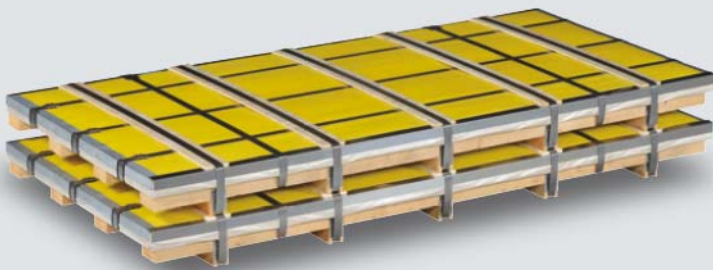
▲ Steel Crate Packaging 鐵箱包裝

# Flat Products Packaging 鋼板/捲包裝

## Sheet / Plate Packaging



▲ Iron Skid 鋼板鐵架

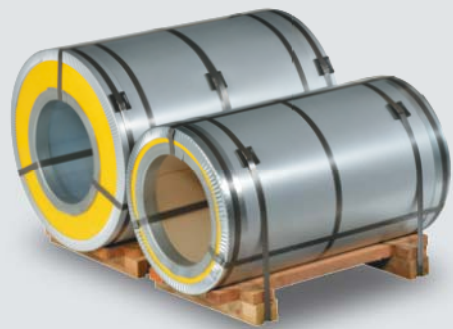


▲ Wooden Skid 鋼板木架



▲ Wooden Bar 鋼板木條

## Coil Packaging



▲ Eye-to-Wall 鋼捲臥式木架



▲ Strip Eye-to-Sky 小鋼捲立式木架



▲ Eye-to-Sky 鋼捲立式木架





No. 270, Sec. 4, Jungshan Road.,  
Shijou Shiang, Chang-Hwa County 524,  
Taiwan



e-Catalogue



Green Sustainability and Environmental Protection.